

# DISTRICT EIGHT

## MATERIAL INDEX

UPDATED

**JUN 2024**

# MATERIAL INDEX

**WOOD** p.03

**STEEL** p.04

**STONE** p.04

**LACQUERWARE** p.04

**FABRIC**      **GRADE A**      p.05

**GRADE B**      p.06

**GRADE C**      p.08

**GRADE D**      p.08

**GRADE E**      p.08

**LEATHER** p.09

# MATERIAL INDEX

## WOOD /

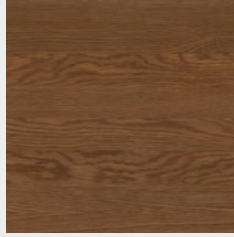
OAK



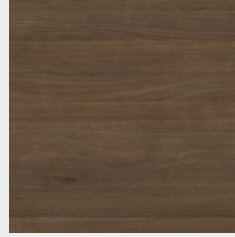
Raw Oak  
MRAO



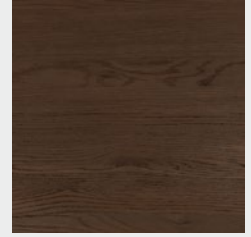
Beige Oak  
MBEO



Hard Fumed Oak  
MHFO



Dry Smoked Oak  
MDSO



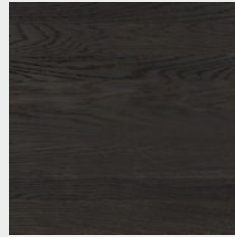
Smoked Oak  
MSMO



Faded Oak  
MFDO



Dark Seared Oak  
MDEO



Ebonized Oak  
MEBO



Charred Black Oak  
MCBO

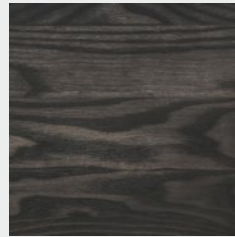
ASH



Light Ash  
MLIA

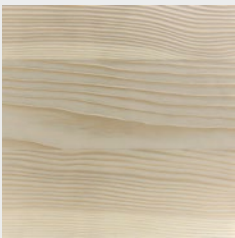


Grey Ash  
MGRA

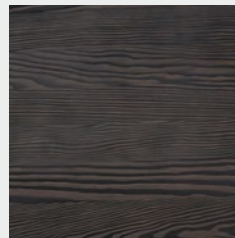


Charcoal Ash  
MCCA

FIR

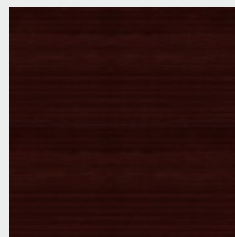


Light Fir  
MLIF

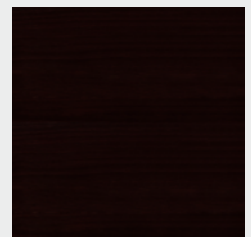


Burned Fir  
MBUF

PADOUK



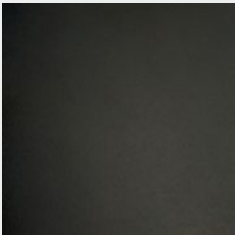
Padouk  
MPAD



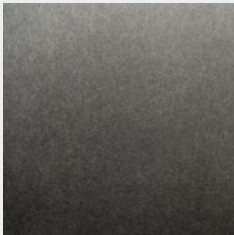
Dark Padouk  
MDAP

# MATERIAL INDEX

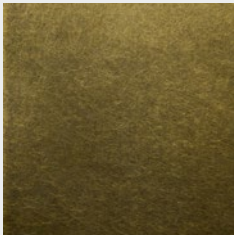
## STEEL /



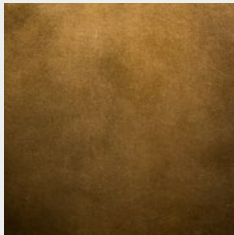
Blackened Steel  
BS



Antique Nickel  
AN

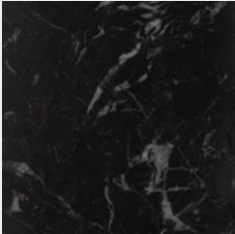


Antique Brass  
AB

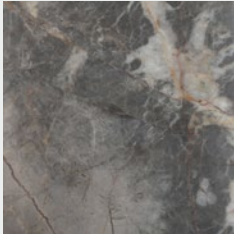


Antique Copper  
AC

## STONE /

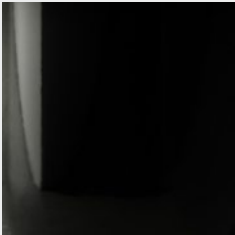


Blackened Steel  
BLM

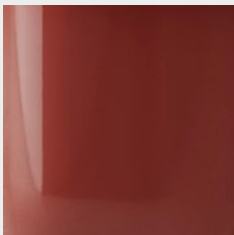


Grey Marble  
GRM

## LACQUERWARE /



Black  
BLA



Oxblood  
OXB

# MATERIAL INDEX

## FABRIC / GRADE A

UNOS



Unos Beige  
1193

OPAL



Opal Ivory  
1174



Opal Wheat  
1175



Opal Mustard  
1176

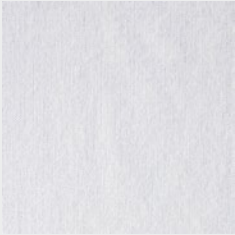


Opal Gray  
1177

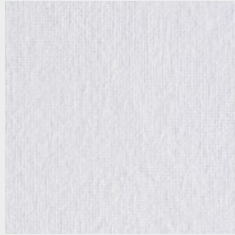


Opal Brick  
1178

MELI



Meli Nuance 1  
1179



Meli Nuance 2  
1180

# MATERIAL INDEX

## FABRIC / GRADE B

FAMO



Famo Ivory  
1163

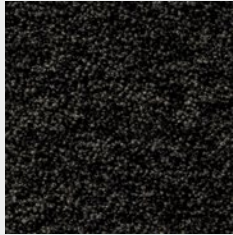
ECHO



Echo Ivory  
1181



Echo Thunder  
1182



Echo Flint  
1183

# MATERIAL INDEX

## FABRIC / GRADE B

ARDA



Arda Pearl  
1023



Arda Thunder  
1037



Arda Moonstone  
1048

GEMA



Gema Pearl  
1027



Gema Thunder  
1036



Gema Moonstone  
1049

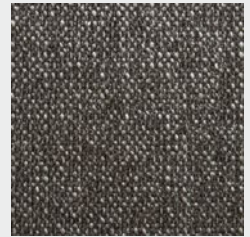
TARA



Tara Ivory  
1085



Tara Quartz  
1052



Tara Flint  
1050

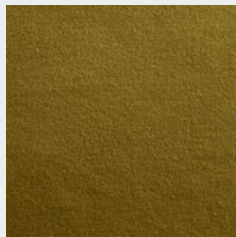
FLER



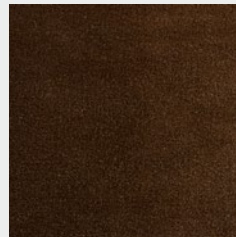
Fler Pearl  
1144



Fler Taupe  
1152



Fler Mustard  
1145



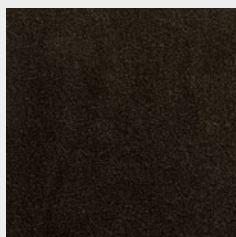
Fler Brick  
1149



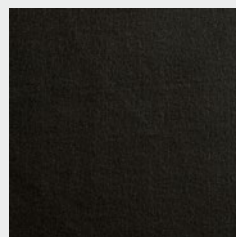
Fler Garnet  
1153



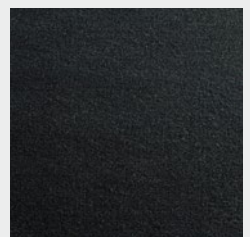
Fler Forest  
1147



Fler Bark  
1150



Fler Flint  
1146



Fler Ocean  
1151

# MATERIAL INDEX

## FABRIC / GRADE C

NOAH



Noah Ivory  
1162



Noah Wheat  
1184



Noah Bark  
1161

## FABRIC / GRADE D

NEOS



Neos Pearl  
1159



Neos Bark  
1158



Neos Flint  
1160

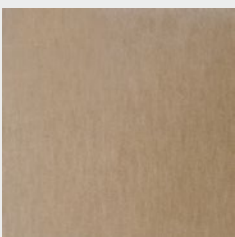
## FABRIC / GRADE E

SILA

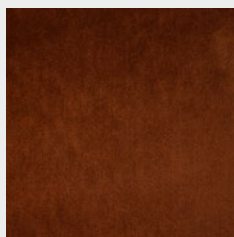


Sila Fog  
1157

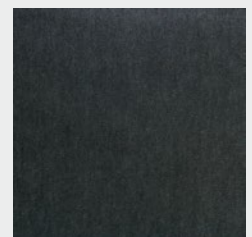
MOHAIR



Mohair Sand  
1092



Mohair Brick  
1093



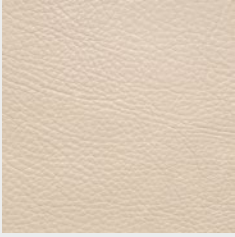
Mohair Sage  
1091



# MATERIAL INDEX

## LEATHER /

OMARI



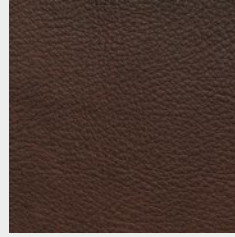
Omari Burlap  
BU



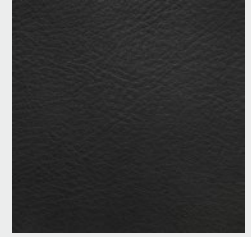
Omari Putty  
PU



Omari Sepia  
SE



Omari Chocolate  
CH



Omari Ink Black  
IB

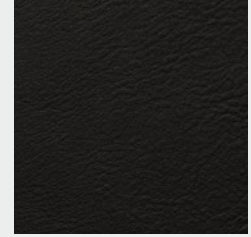
AMOS



Amos Light  
LI



Amos Cognac  
CN



Amos Black  
BL

## WOOD /



Raw Oak  
MRAO



Beige Oak  
MBEO



Dry Smoked Oak  
MDSO



Hard Fumed Oak  
MHFO



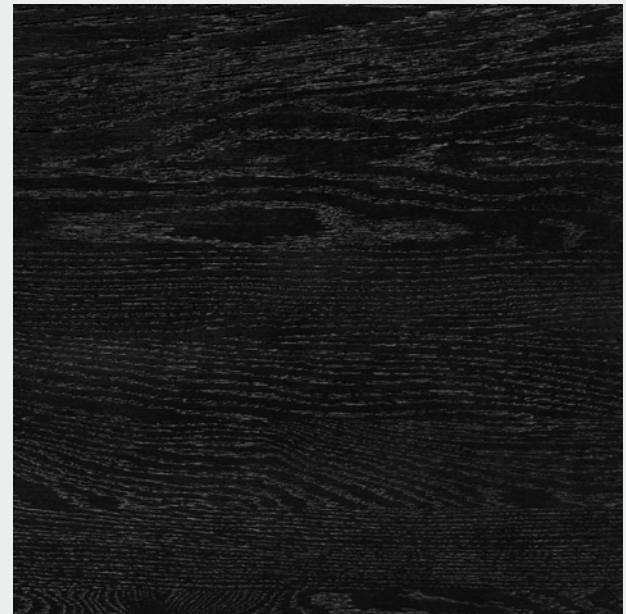
Smoked Oak  
MSMO



Dark Seared Oak  
MDEO



Ebonized Oak  
MEBO



Charred Black Oak  
MCBO

## WOOD /



Faded Oak  
MFDO



Light Ash  
MLIA



Grey Ash  
MGRA



Charcoal Ash  
MCCA

## WOOD /



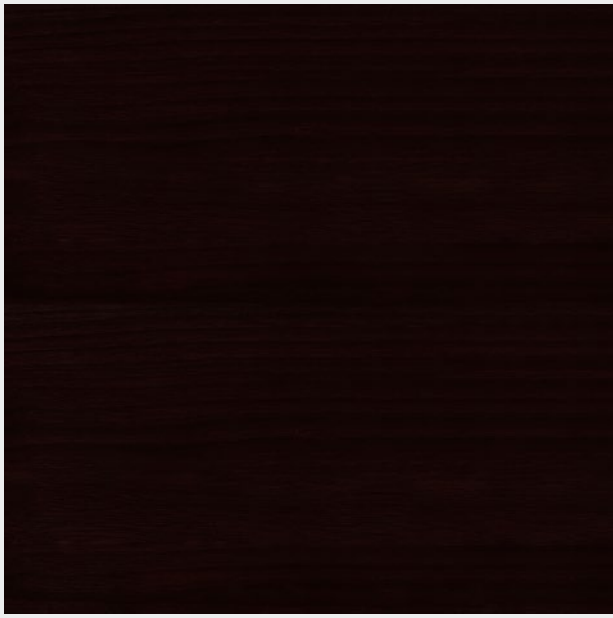
Light Fir  
MLIF



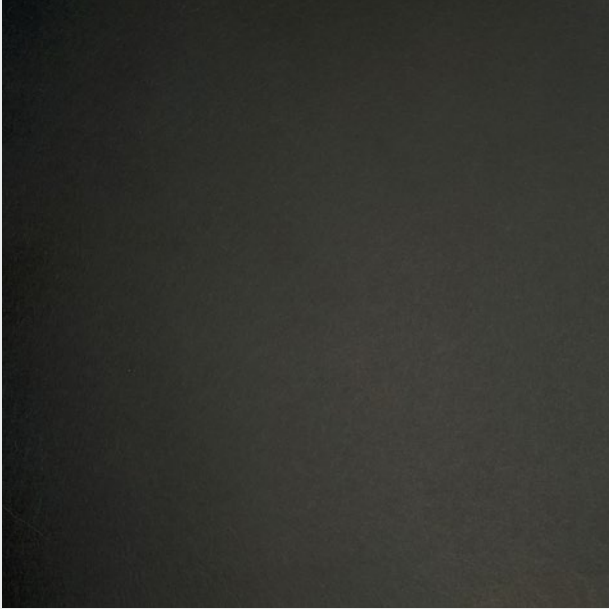
Burned Fir  
MBUF



Padouk  
MPAD



Dark Padouk  
MDAP



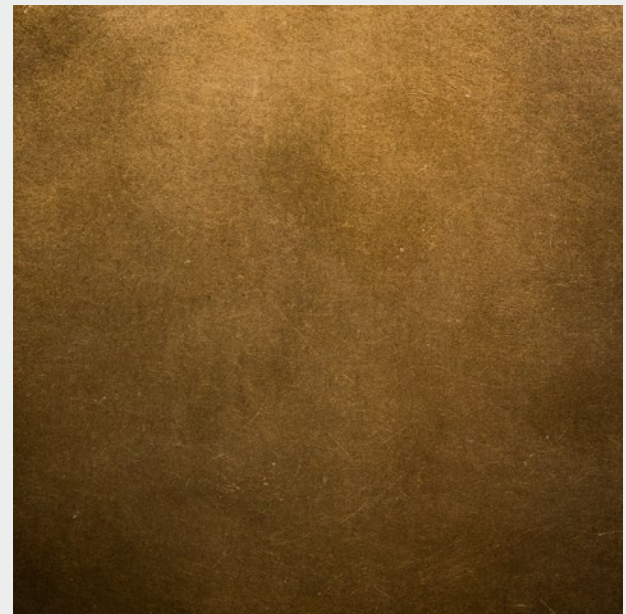
Blackened Steel  
BL



Antique Brass  
AB

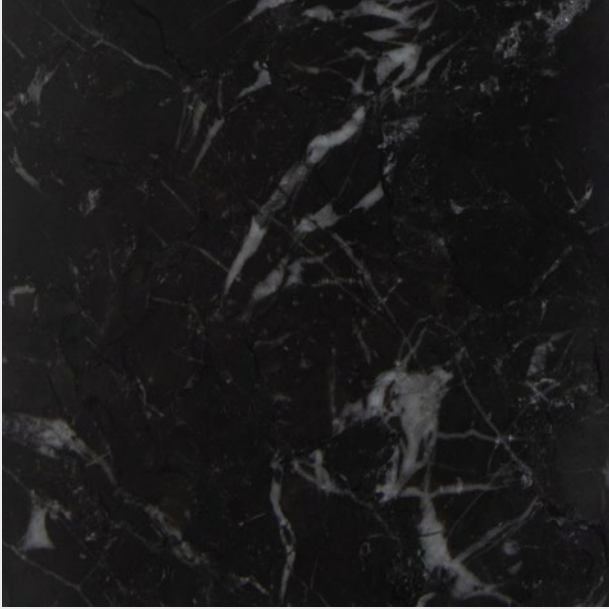


Antique Nickel  
AN

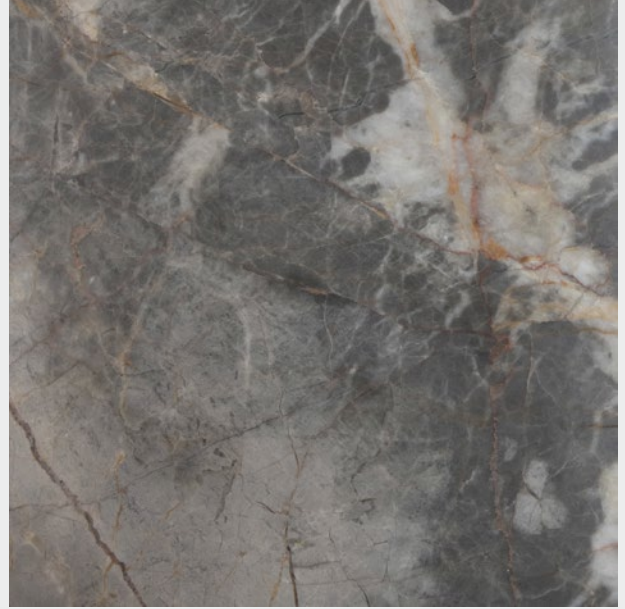


Antique Copper  
AC

## STONE /



Black Marble  
BLM



Grey Marble  
GRM

## LACQUERWARE /



Black  
BLA



Oxblood  
OXB



# MATERIAL INDEX

## FABRIC / GRADE A



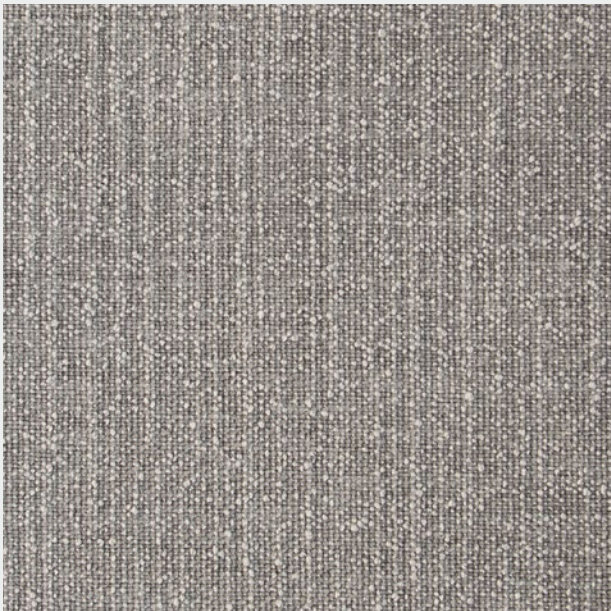
Opal Ivory  
1174



Opal Wheat  
1175



Opal Mustard  
1176



Opal Gray  
1177

# MATERIAL INDEX

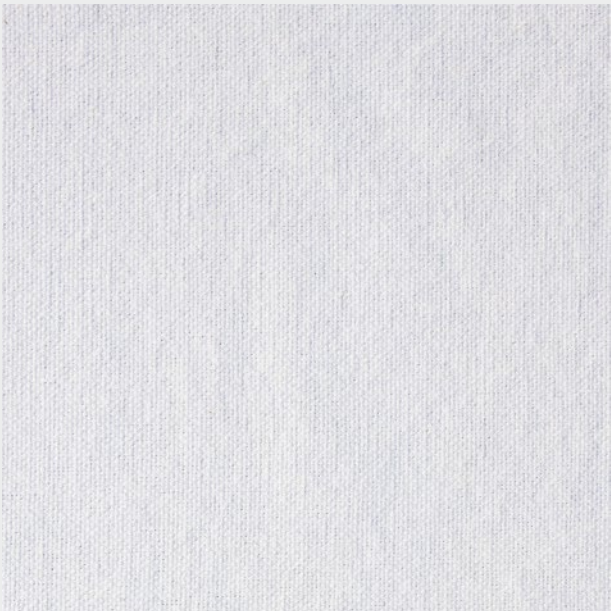
## FABRIC / GRADE A



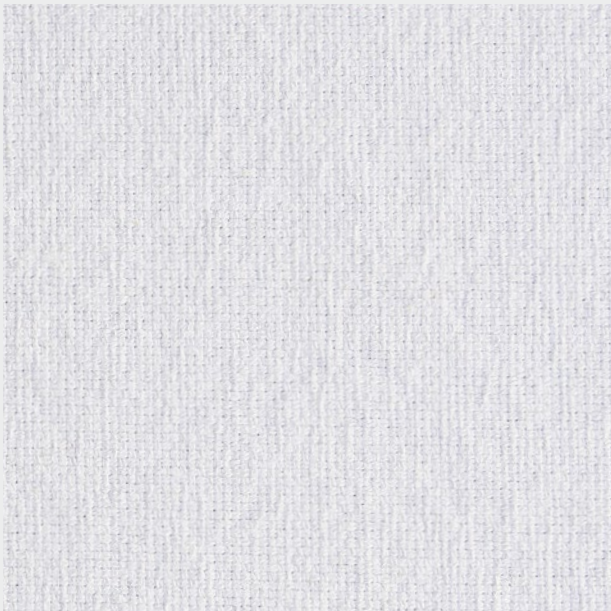
Opal Brick  
1178



Unos Beige  
1193



Meli Nuance 1  
1179



Meli Nuance 2  
1180

# MATERIAL INDEX

## FABRIC / GRADE B



Arda Pearl  
1023



Arda Thunder  
1037



Arda Moonstone  
1048

# MATERIAL INDEX

## FABRIC / GRADE B



Gema Pearl  
1027



Gema Thunder  
1036



Gema Moonstone  
1049

# MATERIAL INDEX

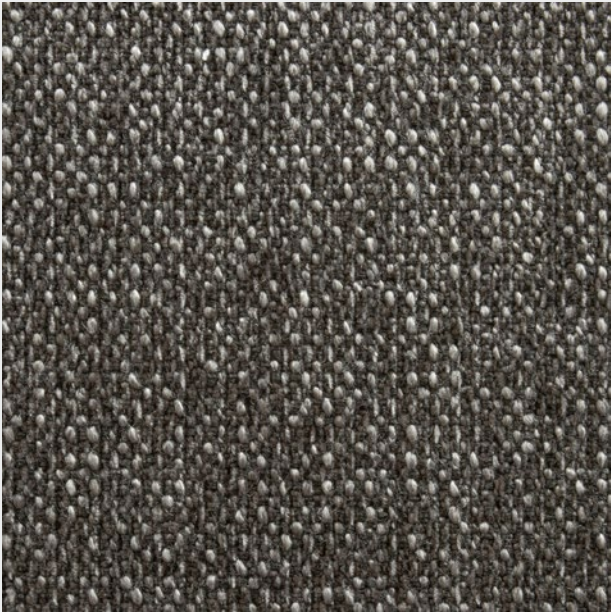
FABRIC / GRADE B



Tara Ivory  
1085



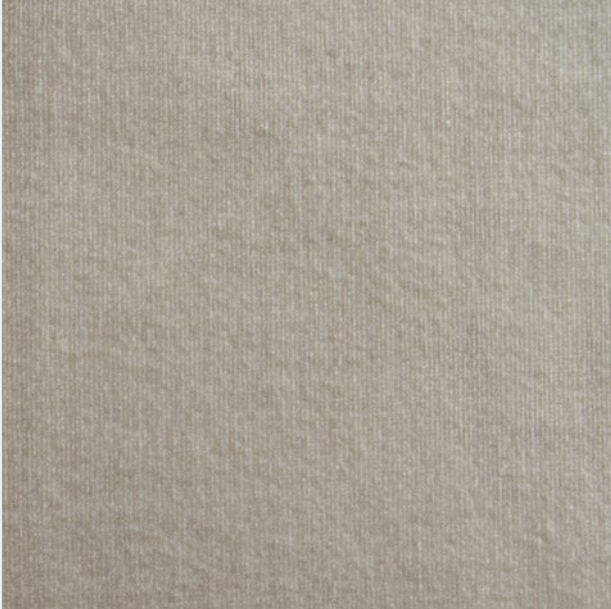
Tara Quartz  
1052



Tara Flint  
1050

# MATERIAL INDEX

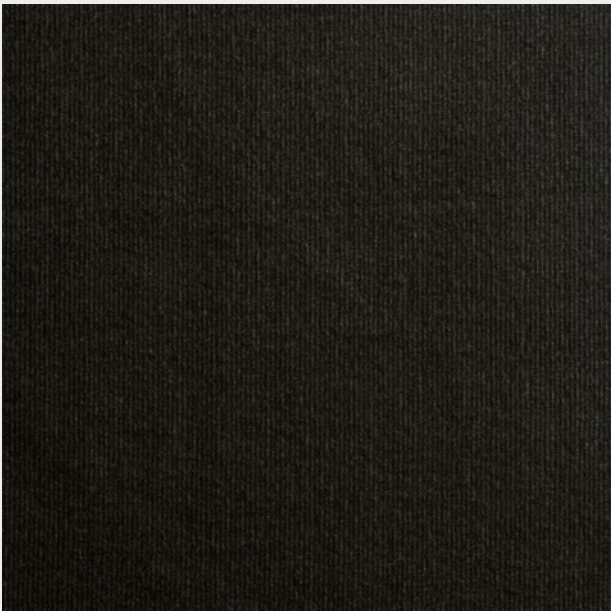
## FABRIC / GRADE B



Fler Pearl  
1144



Fler Taupe  
1152



Fler Flint  
1146



Fler Mustard  
1145

# MATERIAL INDEX

## FABRIC / GRADE B



Fler Bark  
1150



Fler Ocean  
1151



Fler Brick  
1149

# MATERIAL INDEX

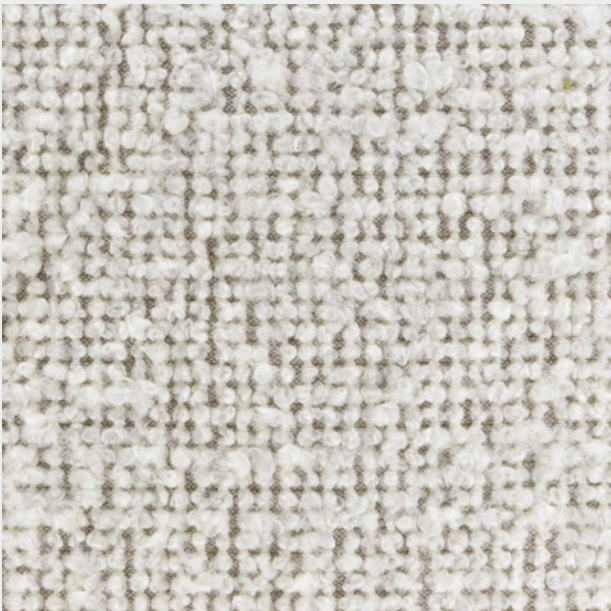
## FABRIC / GRADE B



Fler Forest  
1147



Fler Garnet  
1153



Famo Ivory  
1163



# MATERIAL INDEX

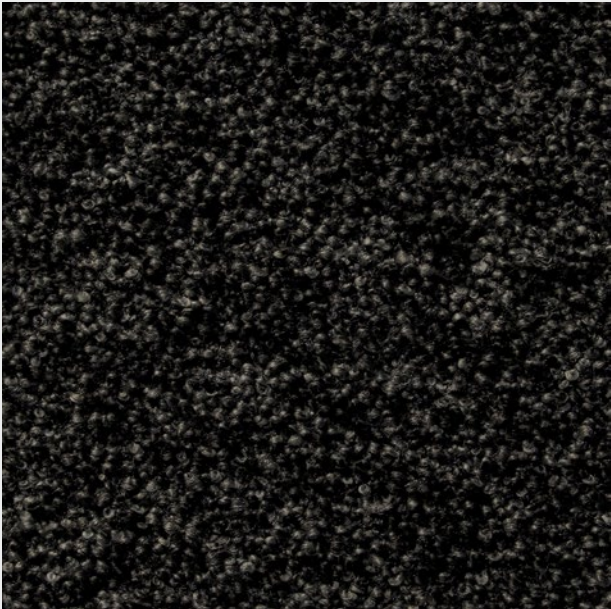
## FABRIC / GRADE B



Echo Ivory  
1181



Echo Thunder  
1182



Echo Flint  
1183

# MATERIAL INDEX

## FABRIC / GRADE C



Noah Ivory  
1162



Noah Bark  
1161



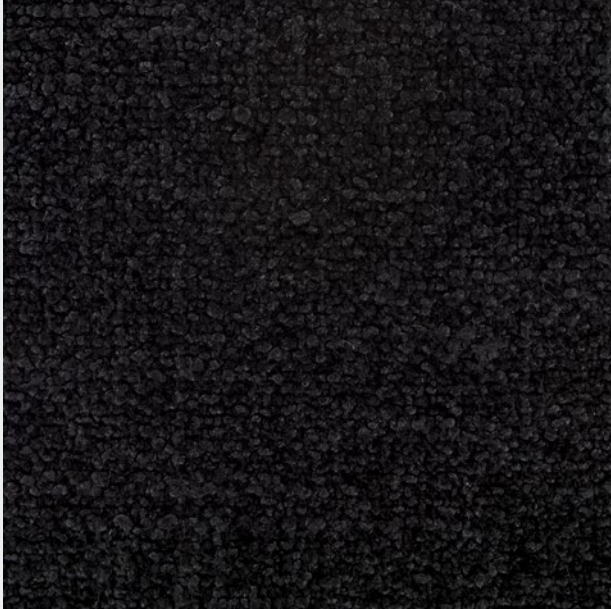
Noah Wheat  
1184

# MATERIAL INDEX

## FABRIC / GRADE D



Neos Pearl  
1159



Neos Flint  
1160



Neos Bark  
1158

# MATERIAL INDEX

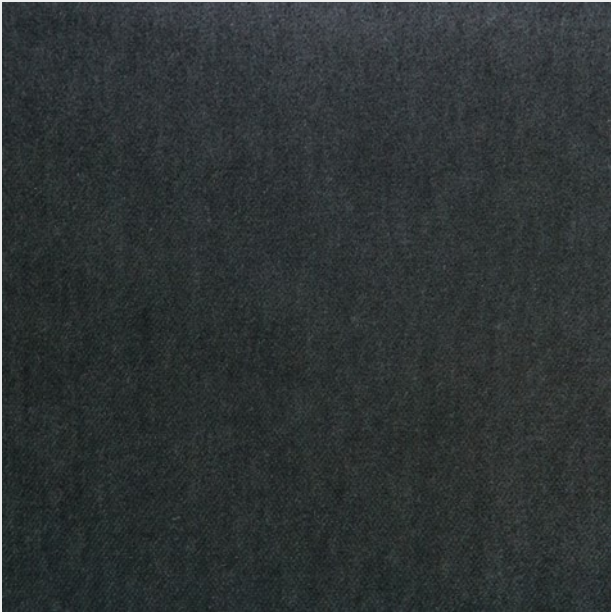
## FABRIC / GRADE E



Sila Fog  
1157



Mohair Sand  
1092



Mohair Sage  
1091



Mohair Brick  
1093

## LEATHER /



Omari Chocolate  
CH



Omari Ink Black  
IB

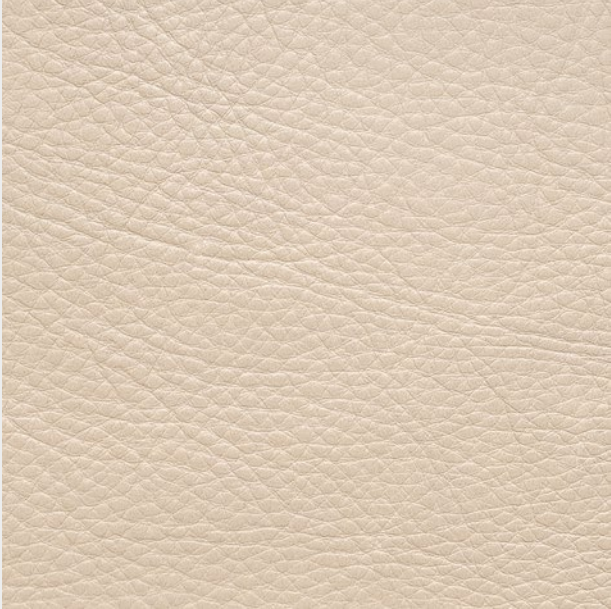


Omari Sepia  
SE



Omari Putty  
PU

## LEATHER /



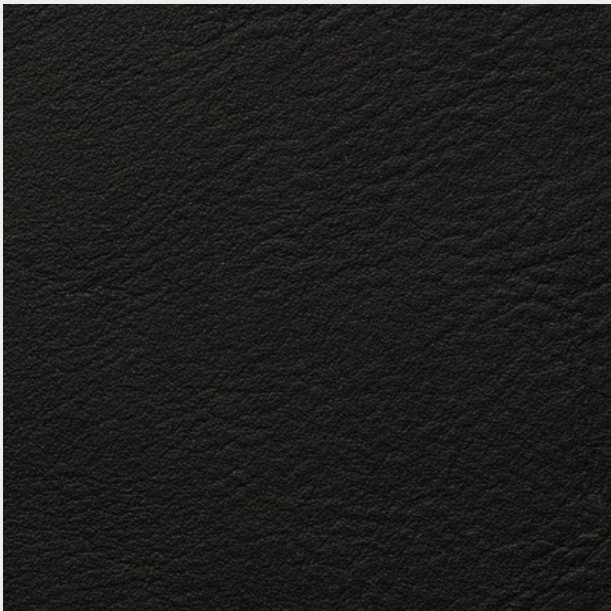
Omari Burlap  
BU



Amos Light  
LI



Amos Cognac  
CN



Amos Black  
BL

*The exclusive District Eight warranty is available only to you, the original purchaser, and becomes effective with your delivery date.*

*District Eight will repair or replace at our discretion any piece of furniture that is defective in material or workmanship under terms and conditions outlined here. If District Eight determines that a repair is impractical, you will be furnished a substitute of the same or similar color, design, and quality.*

## OUR COMMITMENT & WARRANTY

- District Eight warrants to you, the original buyer, that goods shall be free of defects in material and/or workmanship attributable to manufacture for a period specified in the warranty details below. Damage resulting from improper handling after merchandise is received or from exposure to weather or extreme atmospheric conditions is not covered by the District Eight warranty. Warranty is subject to normal use under normal conditions.

## DURATION OF WARRANTY

- For products invoiced to a company, District Eight offers a **1-year warranty** from date of delivery against manufacturer's defects. Qualified defects will be repaired or replaced at company's option, at no cost to the customer.
- For products invoiced to an individual, District Eight offers a **2-year warranty** from date of delivery against manufacturer's defects. Qualified defects will be repaired or replaced at company's option, at no cost to the customer.

## LIMITATIONS & COVERAGE EXCLUSIONS

District Eight makes no implied warranties of merchantability or fitness for a particular purpose. These and all other implied warranties are specifically disclaimed. By implied warranties, District Eight references warranties that the law sometimes implies to have been given by the seller, even though they are not documented in writing.

### PLACE OF PURCHASE

- Our warranty protects purchases from Authorized District Eight Distributors, Wholesalers, Retailers and from District Eight directly through our showroom or website.

### IMPROPER CARE AND USE

- Proper care and usage are essential to preserving your rights under the warranty. This warranty does not apply if your District Eight merchandise is damaged by the use of detergents, abrasives or harsh cleaning agents.

### ACCIDENTS, ABUSE, NORMAL WEAR & TEAR

- This warranty does not cover damage resulting from negligence, abuse, normal wear and tear, or accidents: including (but not limited to) burns, cuts, scratches, tears, scuffs, watermarks, indentations or pet damage.

### PRODUCT MODIFICATIONS

- Any product modification by retailer, consumer or other parties not authorized by District Eight will void this warranty.

### FLOOR SAMPLES OR AS-IS PURCHASES

- This warranty does not cover floor samples or products designated "as is" at time of purchase.

## TOLERANCES

- COM must be approved by District Eight to ensure suitability for upholstery.
- All sizes and dimensions are subject to a 0.05cm tolerance.
- Any colour samples or samples of wood can only be considered as a guide. District Eight cannot be held responsible for any differences between the sample and the delivered goods, as colour changes occur naturally over time. Variances are not considered to be defects. Wear and tear due to normal everyday use on upholstery, surfaces etc. are not considered to be defects.

## CLAIMS PROCEDURE

- First and foremost, should you notice a manufacturing defect, it is important that you promptly notify the District Eight sales and marketing team. To exercise your rights under this warranty, you must submit the original invoice number, date of damage or defect, product and description, evidence of damage (photo or video) and how it occurred via the claims form.
- Please find the claim form on our website at [districteight.com/pages/warranty-information](http://districteight.com/pages/warranty-information)
- For your convenience, there are a number of ways you may contact us: in writing, via fax, email or online as follows:

**INFO@DISTRICTEIGHT.COM**

**(+84) 28 38 170 310**

## GENERAL CONDITION

- Any liability for District Eight is in any case excluded with respect to the technical and aesthetic performance of the products upholstered using the Client's own fabric or Client's own leather.
- Orders relating to products to be covered in fabric and leather will only be accepted for models where the price list indicates "COM".
- We reserve the right to reject any COM that we feel inadequate for any reason, and we are not responsible for any unsatisfactory results or deficiencies where COM or COM is used or involved.

## REQUIREMENT OF SAMPLE

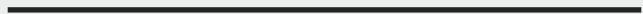
- District Eight requires a sample to be sent free of all expenses, together with a data sheet of the COM, for the purpose of a feasibility study.
- The COM samples should be minimum cm 30 x 30 in size for the necessary tests and should be sent to the attention of the District Eight, together with the fully filled document "COM MANAGEMENT FORM".

## MATERIALS CONDITIONS

- Linear meters (or Yardage) quoted in the price list is approximate only. Linear meters (or Yardage) requirements for cover material are based on plain fabric cm 140 (55") width minimum. Fabrics measuring less than cm 140 in height may require additional fabric and/or, in some cases, may not be feasible and/or may require the inclusion of additional seams for particular models.
- Fabric requirements for patterns will be estimated upon receipt of a sample; as a rule, District Eight does not pattern match.
- Zipper and thread will follow District Eight available option; customer can send zipper and thread along with COM if preferred.
- For fabrics with repeat patterns, please specify the pattern size (vertically/horizontally) on the "COM MANAGEMENT FORM"
- For orders in COM for Projects/Contracts, it is necessary to send the flame-retardant certificate of COM to ensure suitability for the public spaces use.

## SHIPPING OF CUSTOMER OWN FABRIC AND/OR CUSTOMER OWN LEATHER

- Execution of a COM order and shipping terms order shall have validity from the date the COM is registered, following the receipt of COM and confirmation of feasibility, and shall be communicated by the Customer Service who will send the order confirmation.
- When a COM order is confirmed, District Eight shall not be held liable for any faults in appearance and durability, or for any other quality, technical or aesthetic issue concerning the products made using the COM.
- Certificate of Origin COM or any special required documents by local authorities when deliver the order need to be provided by Customer.





# COM MANAGEMENT FORM

CUSTOMER\*:

ORDER NUMBER\*:

SHIPPED FROM\*

Manufacturer:

Dealer:

Other supplier:

Name of fabric/leather MANUFACTURER\*

Name of COM

Color Reference

Composition

Quantity

Fabric Height

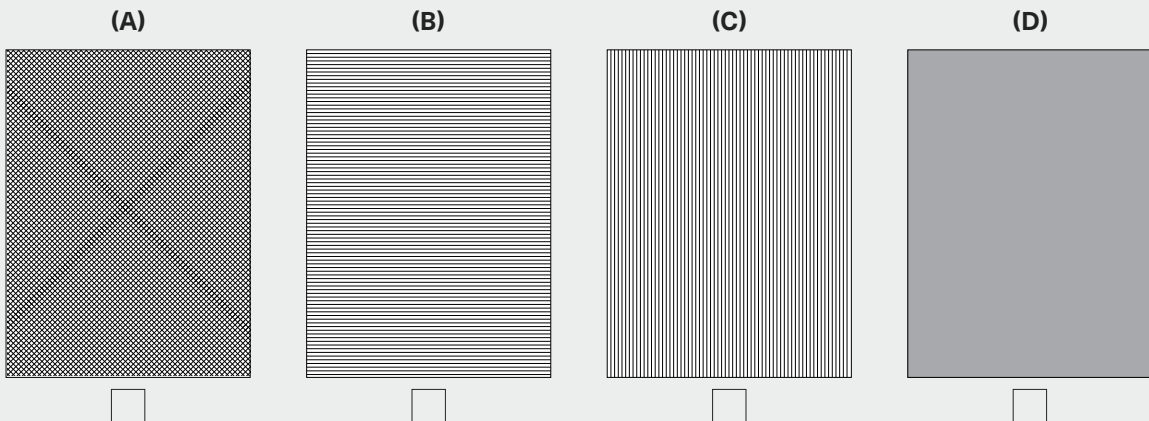
COM in compliance with:

- \_\_\_\_\_
- \_\_\_\_\_
- Attached certificate

COM special treatments and customer's remarks:

## IMPORTANT NOTES:

- Unless otherwise specified, the "correct" face of the fabric is the internal side turned towards the roll
- Unless otherwise specified, the product will be realized with the fabric pattern laid out vertically (e.g. Figure C)



**DISTRICT EIGHT HEADQUARTERS:**

Lot E2, Street 01, Tan Do Industrial Park, Duc Hoa Ha, Duc Hoa, Long An, Vietnam

**DISTRICT EIGHT SÀI GÒN SHOWROOM:**

33 Dong Khoi Street, Ben Nghe Ward, District 1, Ho Chi Minh City, Vietnam

**DISTRICT EIGHT ITALIA S.R.L.:**

Via Giovanni Falcone n.7  
62029 Tolentino (MC) Italy

(+84) 90 238 83 10

[www.districteight.com](http://www.districteight.com)

---