

D8

MATERIAL INDEX

UPDATED

MAY 2025

WOOD 8 - 13

STEEL 14

STONE 15

LACQUER 16

FABRIC	GRADE B	17 - 23
	GRADE C	24
	GRADE D	25
	GRADE E	26

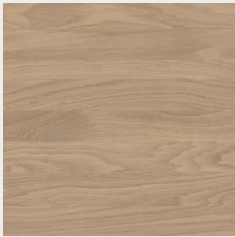
LEATHER 27 - 30

WOOD /

OAK



Faded Oak
MFDO



Raw Oak
MRAO



Beige Oak
MBEO



Hard Fumed Oak
MHFO



Dry Smoked Oak
MDSO



Smoked Oak
MSMO



Dark Seared Oak
MDEO



Ebonized Oak
MEBO



Charred Black Oak
MCBO

ASH



Light Ash
MLIA



Grey Ash
MGRA



Charcoal Ash
MCCA

FIR



Light Fir
MLIF



Burned Fir
MBUF

PADOUK



Padouk
MPAD

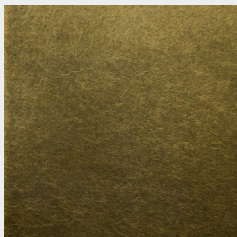


Dark Padouk
MDAP

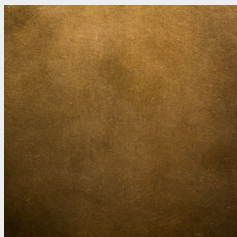
MATERIAL INDEX

3
/ 35

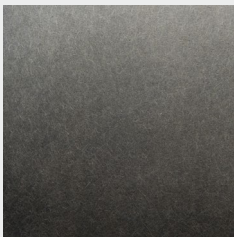
STEEL /



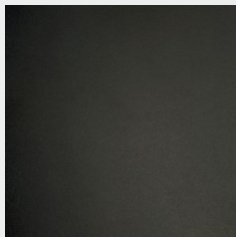
Antique Brass
AB



Antique Copper
AC



Antique Nickel
AN

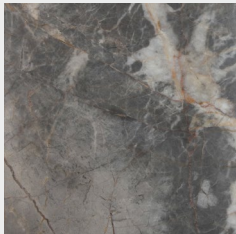


Blackened Steel
BS

STONE /



Athena Grey Marble
ATM

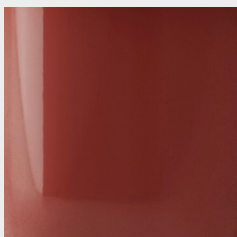


Grey Marble
GRM

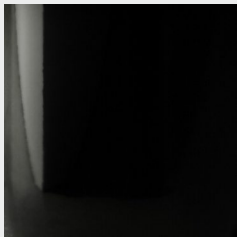


Black Marble
BLM

LACQUER /



Oxblood
OXB

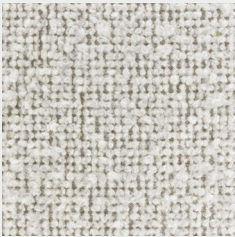


Black
BLA

MATERIAL INDEX

FABRIC / GRADE B

FAMO



Famo Ivory
1163

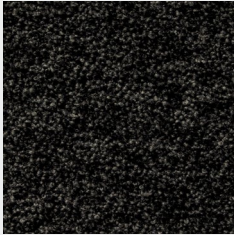
ECHO



Echo Ivory
1181



Echo Thunder
1182



Echo Flint
1183

MATERIAL INDEX

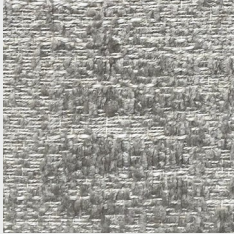
FABRIC / GRADE B

5
/ 35

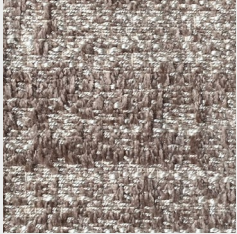
ARDA



Arda Pearl
1023



Arda Thunder
1037



Arda Moonstone
1048

GEMA



Gema Pearl
1027



Gema Thunder
1036



Gema Moonstone
1049

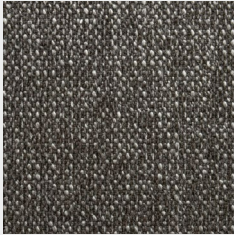
TARA



Tara Ivory
1085



Tara Quartz
1052



Tara Flint
1050

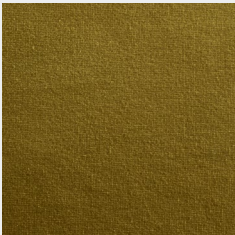
FLER



Fler Pearl
1144



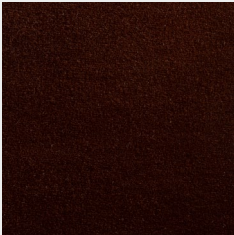
Fler Taupe
1152



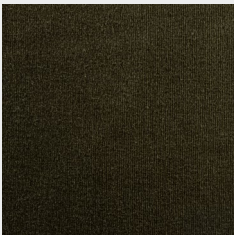
Fler Mustard
1145



Fler Brick
1149



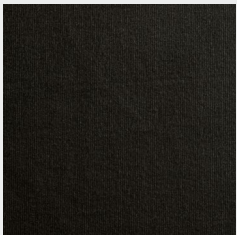
Fler Garnet
1153



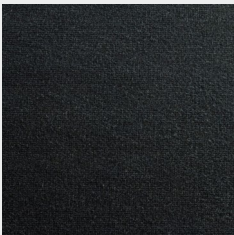
Fler Forest
1147



Fler Bark
1150



Fler Flint
1146



Fler Ocean
1151

To go back to the main index, please click on each respective thumbnail.

MATERIAL INDEX

FABRIC / GRADE C

NOAH



Noah Ivory
1162



Noah Wheat
1184



Noah Bark
1161

FABRIC / GRADE D

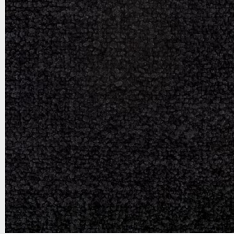
NEOS



Neos Pearl
1159



Neos Bark
1158



Neos Flint
1160

FABRIC / GRADE E

SILA

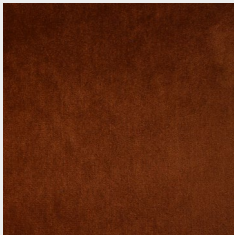


Sila Fog
1157

MOHAIR



Mohair Sand
1092



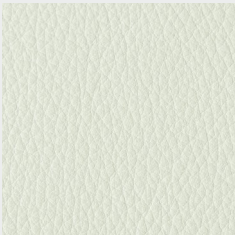
Mohair Brick
1093



Mohair Sage
1091

LEATHER /

OMARI



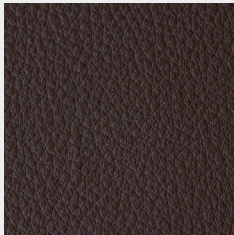
Omari Burlap
BU



Omari Putty
PU



Omari Sepia
SE



Omari Chocolate
CH



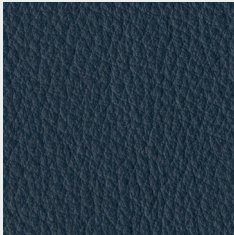
Omari Ink Black
IB



Omari Teak
TE



Omari Loden
LD



Omari Marine
MR



Omari Burgundy
BG

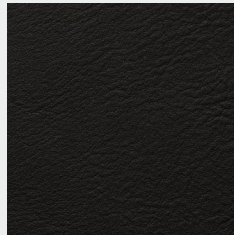
AMOS



Amos Light
LI



Amos Cognac
CN



Amos Black
BL

MATERIAL INDEX

WOOD / OAK

8
/ 35



Faded Oak
MFDO



Raw Oak
MRAO



Beige Oak
MBEO

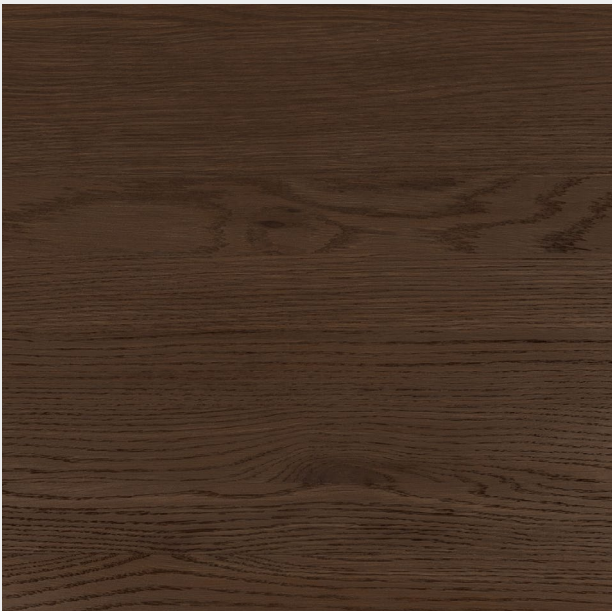
WOOD / OAK



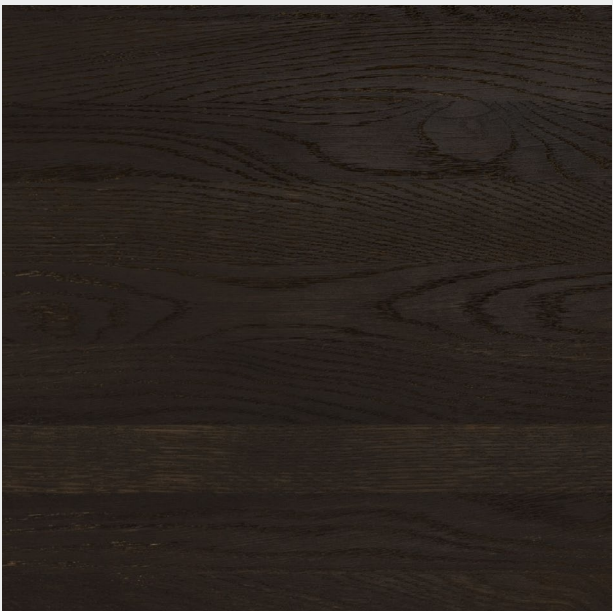
Hard Fumed Oak
MHFO



Dry Smoked Oak
MDSO



Smoked Oak
MSMO



Dark Seared Oak
MDEO



Ebonized Oak
MEBO



Charred Black Oak
MCBO

WOOD / ASH



Light Ash
MLIA



Grey Ash
MGRA



Charcoal Ash
MCCA

WOOD / FIR

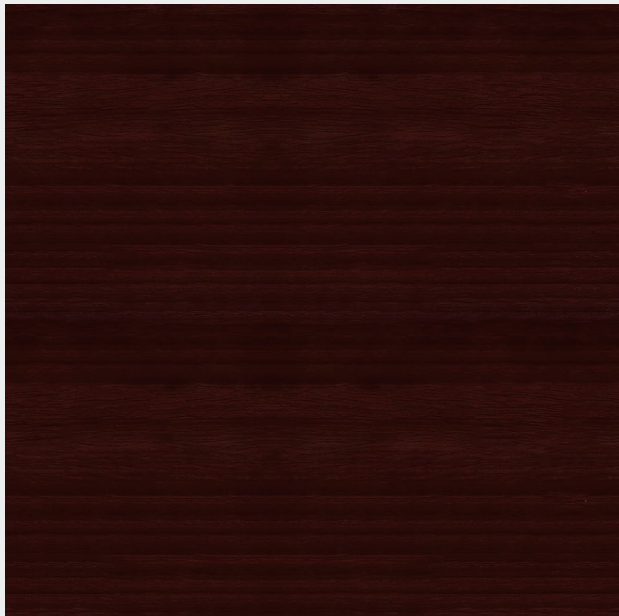


Light Fir
MLIF



Burned Fir
MBUF

WOOD / PADOUK



Padouk
MPAD



Dark Padouk
MDAP



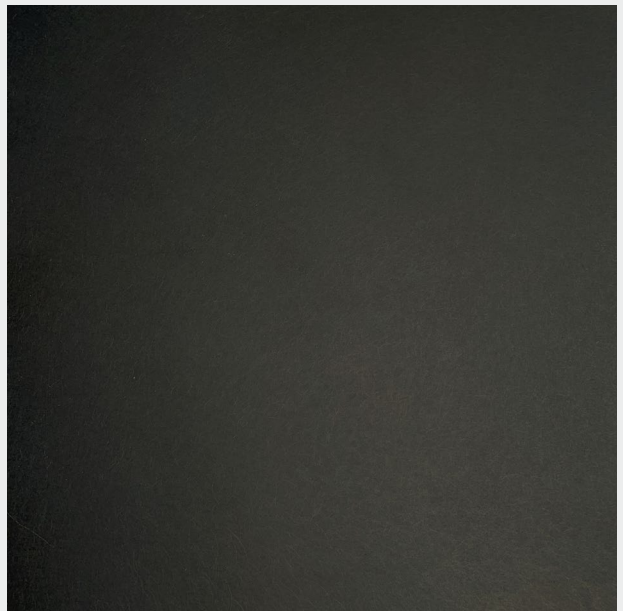
Antique Brass
AB



Antique Copper
AC



Antique Nickel
AN

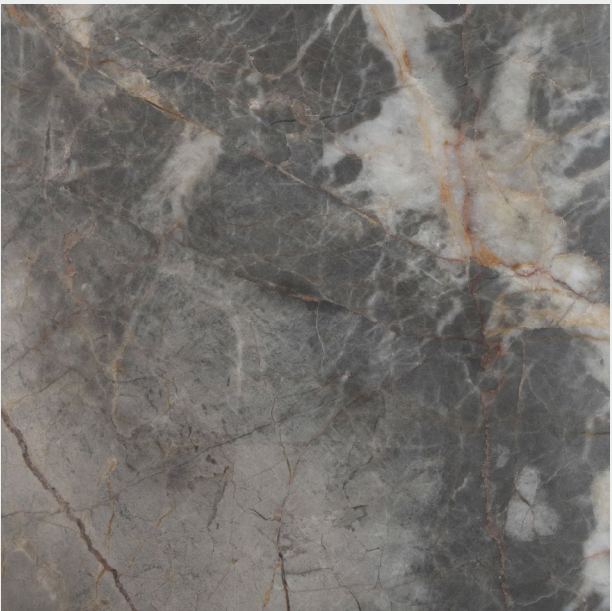


Blackened Steel
BL

STONE /



Athena Grey Marble
ATM



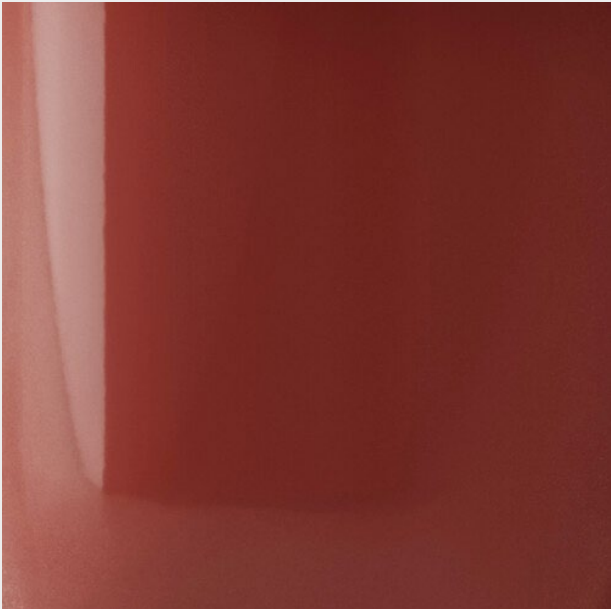
Grey Marble*
GRM



Black Marble*
BLM

* For Torus table only.

LACQUER /



Oxblood
OXB



Black
BLA

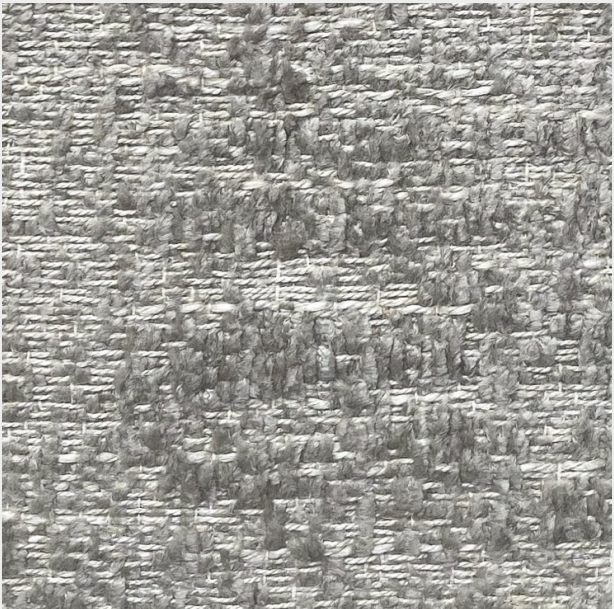
MATERIAL INDEX

FABRIC / GRADE B

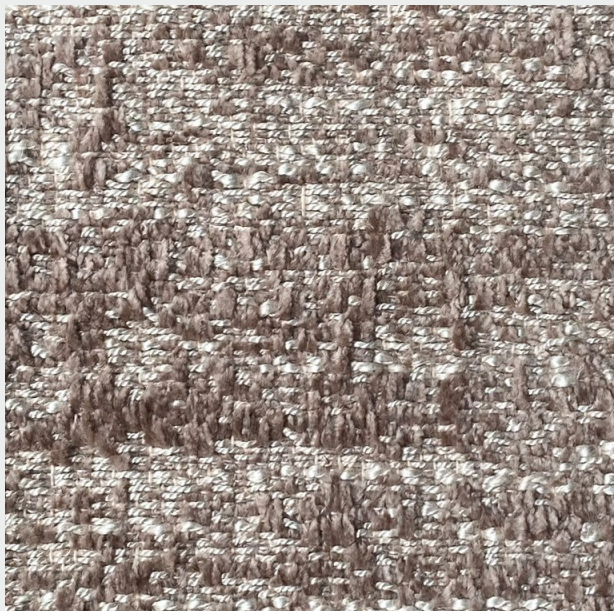
17
/ 35



Arda Pearl
1023



Arda Thunder
1037



Arda Moonstone
1048

MATERIAL INDEX

FABRIC / GRADE B

18
/ 35



Gema Pearl
1027



Gema Thunder
1036



Gema Moonstone
1049

MATERIAL INDEX

FABRIC / GRADE B

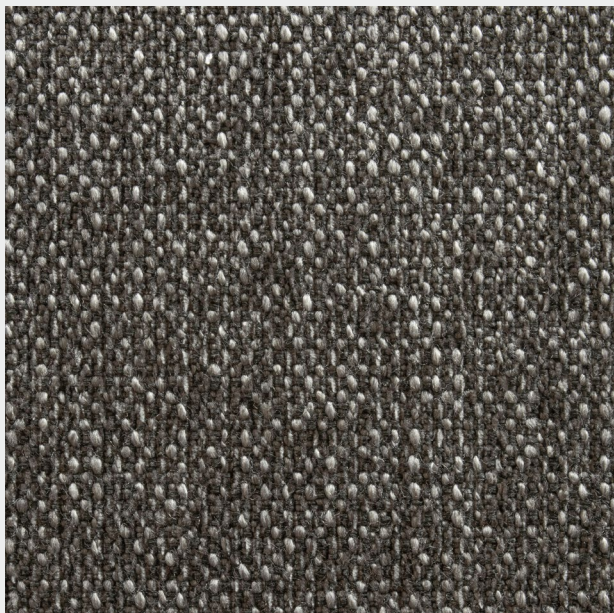
19
/ 35



Tara Ivory
1085



Tara Quartz
1052



Tara Flint
1050

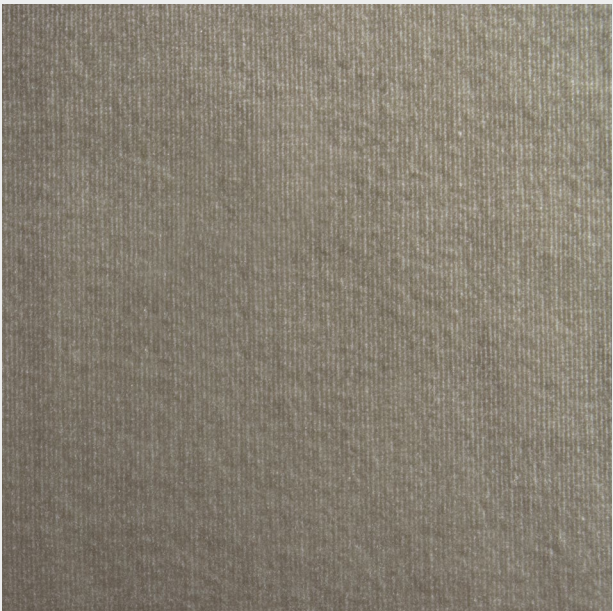
MATERIAL INDEX

FABRIC / GRADE B

20
/ 35



Fler Pearl
1144



Fler Taupe
1152



Fler Mustard
1145



Fler Flint
1146

MATERIAL INDEX

FABRIC / GRADE B

21
/ 35



Fler Brick
1149



Fler Bark
1150



Fler Ocean
1151

MATERIAL INDEX

FABRIC / GRADE B

22
/ 35



Fler Forest
1147

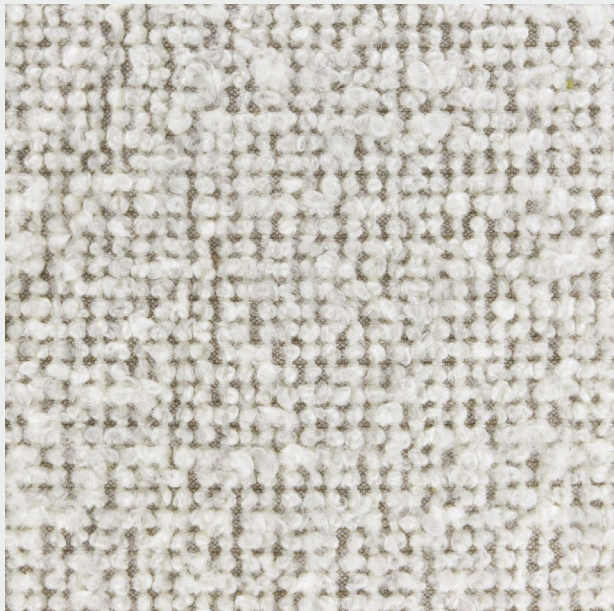


Fler Garnet
1153

MATERIAL INDEX

FABRIC / GRADE B

23
/ 35



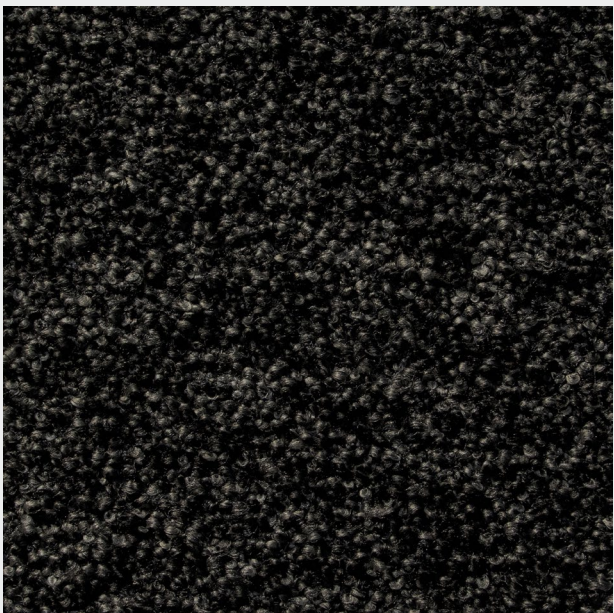
Famo Ivory
1163



Echo Ivory
1181



Echo Thunder
1182



Echo Flint
1183

MATERIAL INDEX

FABRIC / GRADE C

24
/ 35



Noah Ivory
1162



Noah Wheat
1184



Noah Bark
1161

MATERIAL INDEX

FABRIC / GRADE D

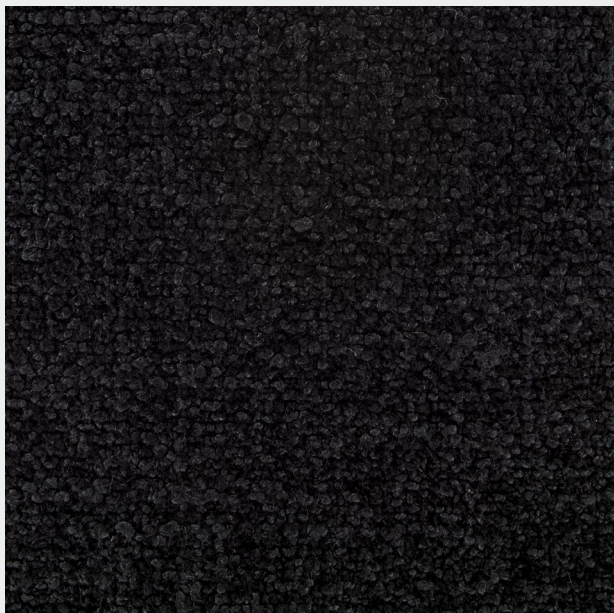
25
/ 35



Neos Pearl
1159



Neos Bark
1158



Neos Flint
1160

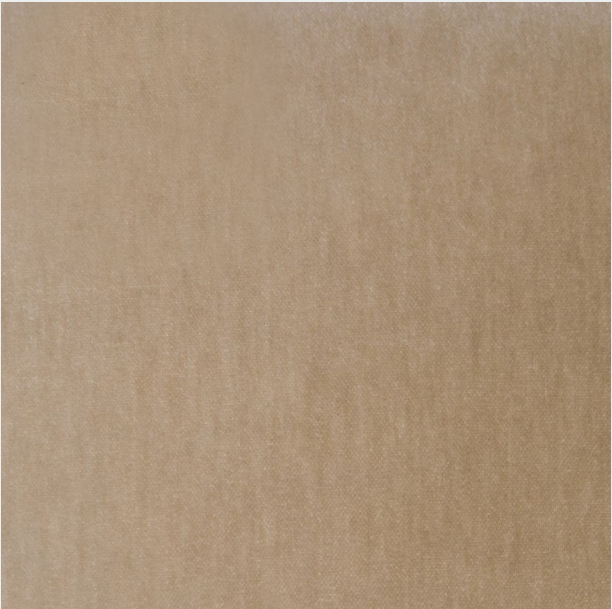
MATERIAL INDEX

FABRIC / GRADE E

26
/ 35



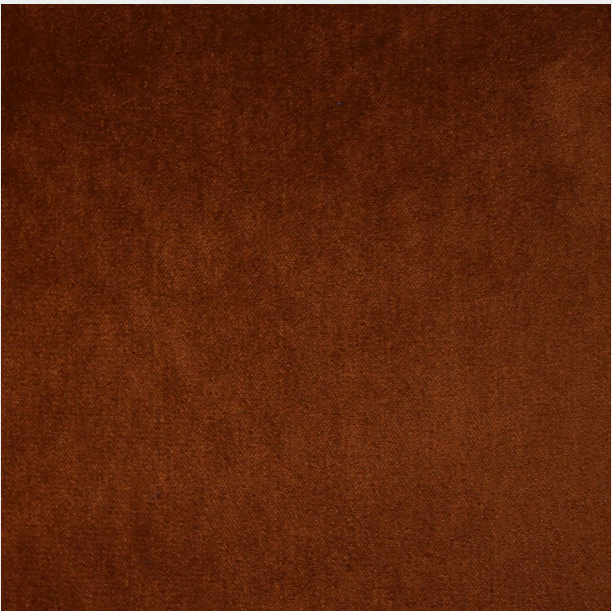
Sila Fog
1157



Mohair Sand
1092



Mohair Sage
1091



Mohair Brick
1093

MATERIAL INDEX

27
/ 35

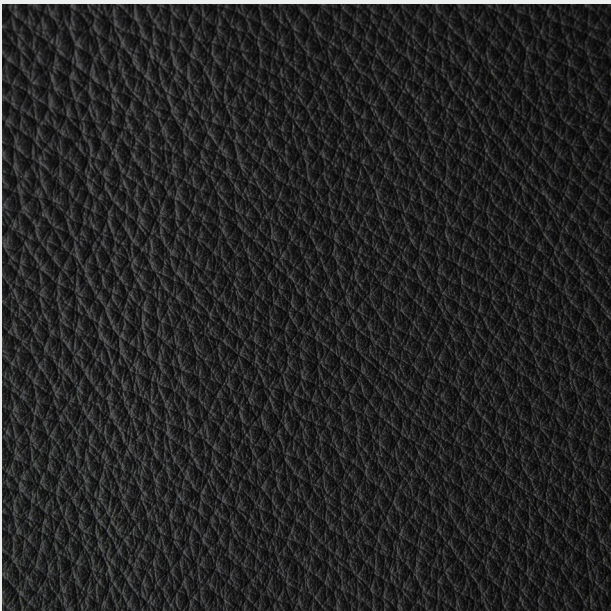
LEATHER / OMARI



Omari Sepia
SE



Omari Chocolate
CH



Omari Ink Black
IB



Omari Burlap
BU



Omari Putty
PU



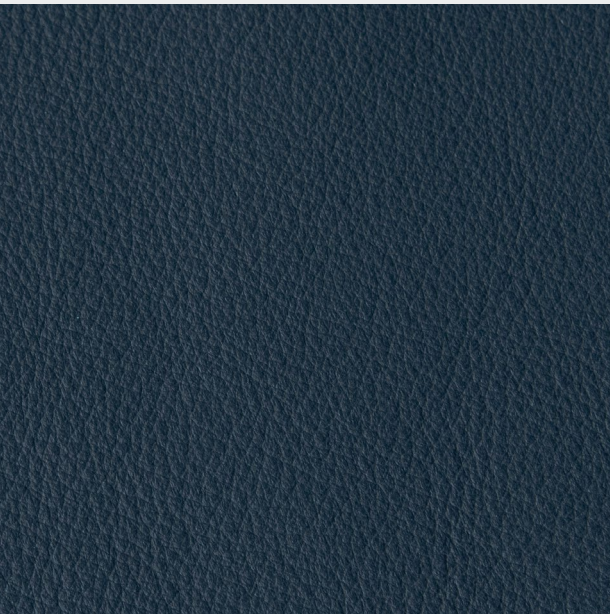
Omari Burgundy
BG



Omari Teak
TE



Omari Loden
LD



Omari Marine
MR

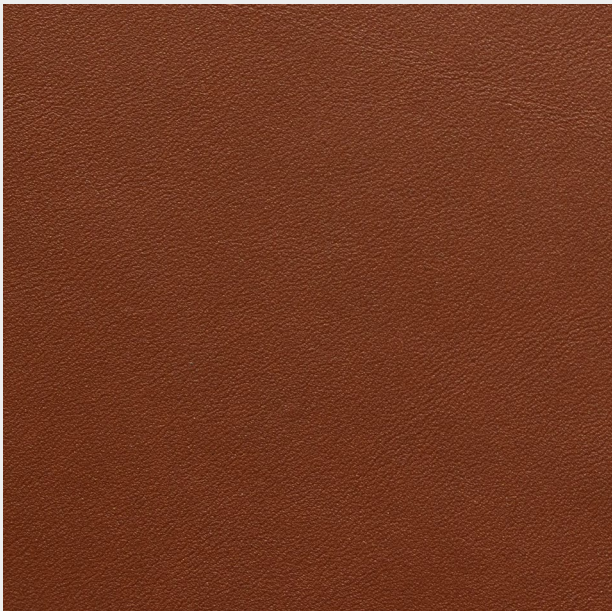
MATERIAL INDEX

LEATHER / AMOS*

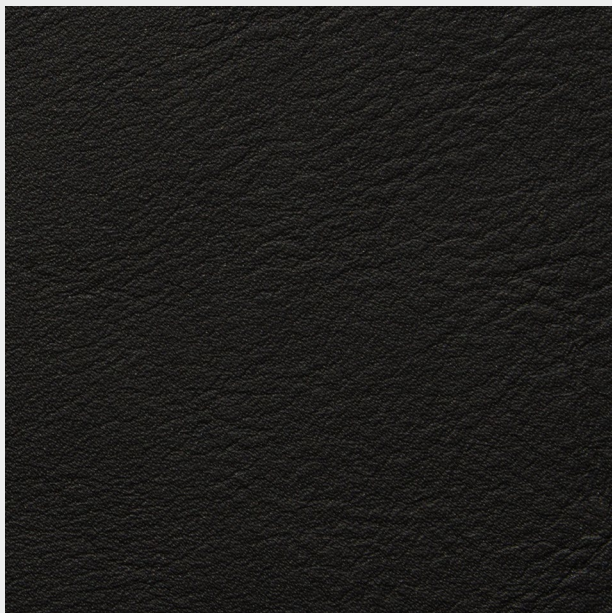
30
/ 35



Amos Light
LI



Amos Cognac
CN



Amos Black
BL

* For Lodge and Buom collection only.

The exclusive District Eight warranty is available only to you, the original purchaser, and becomes effective with your delivery date.

District Eight will repair or replace at our discretion any piece of furniture that is defective in material or workmanship under terms and conditions outlined here. If District Eight determines that a repair is impractical, you will be furnished a substitute of the same or similar color, design, and quality.

OUR COMMITMENT & WARRANTY

- District Eight warrants to you, the original buyer, that goods shall be free of defects in material and/or workmanship attributable to manufacture for a period specified in the warranty details below. Damage resulting from improper handling after merchandise is received or from exposure to weather or extreme atmospheric conditions is not covered by the District Eight warranty. Warranty is subject to normal use under normal conditions.

DURATION OF WARRANTY

- For products invoiced to a company, District Eight offers a **1-year warranty** from date of delivery against manufacturer's defects. Qualified defects will be repaired or replaced at company's option, at no cost to the customer.
- For products invoiced to an individual, District Eight offers a **2-year warranty** from date of delivery against manufacturer's defects. Qualified defects will be repaired or replaced at company's option, at no cost to the customer.

LIMITATIONS & COVERAGE EXCLUSIONS

District Eight makes no implied warranties of merchantability or fitness for a particular purpose. These and all other implied warranties are specifically disclaimed. By implied warranties, District Eight references warranties that the law sometimes implies to have been given by the seller, even though they are not documented in writing.

PLACE OF PURCHASE

- Our warranty protects purchases from Authorized District Eight Distributors, Wholesalers, Retailers and from District Eight directly through our showroom or website.

IMPROPER CARE AND USE

- Proper care and usage are essential to preserving your rights under the warranty. This warranty does not apply if your District Eight merchandise is damaged by the use of detergents, abrasives or harsh cleaning agents.

ACCIDENTS, ABUSE, NORMAL WEAR & TEAR

- This warranty does not cover damage resulting from negligence, abuse, normal wear and tear, or accidents: including (but not limited to) burns, cuts, scratches, tears, scuffs, watermarks, indentations or pet damage.

PRODUCT MODIFICATIONS

- Any product modification by retailer, consumer or other parties not authorized by District Eight will void this warranty.

FLOOR SAMPLES OR AS-IS PURCHASES

- This warranty does not cover floor samples or products designated "as is" at time of purchase.

TOLERANCES

- COM must be approved by District Eight to ensure suitability for upholstery.
- All sizes and dimensions are subject to a 0.05cm tolerance.
- The material finishing applied to the products may present variations in tone from one batch to another and discoloration from time to time. Some materials present variations which are more accentuated since they are natural materials, as in the case of various types of leathers or fabrics left in their natural state or only partially dyed.
- From time to time, the surface of the leathers have marks and imperfections such as: scars, wrinkles, diversity in luster or tonality of colors, spots, etc.
- Exposure to direct sunlight of the products upholstered in fabric or leather is not recommended as it will alter the colors.
- The folds that may occur with use are normal and do not constitute grounds for complaint. Regular maintenance is recommended.
- Any colour samples or samples of wood can only be considered as a guide. District Eight cannot be held responsible for any differences between the sample and the delivered goods, as colour changes occur naturally over time. Variances are not considered to be defects. Wear and tear due to normal everyday use on upholstery, surfaces etc. are not considered to be defects.

CLAIMS PROCEDURE

- First and foremost, should you notice a manufacturing defect, it is important that you promptly notify the District Eight sales and marketing team. To exercise your rights under this warranty, you must submit the original invoice number, date of damage or defect, product and description, evidence of damage (photo or video) and how it occurred via the claims form.
- Please find the claim form on our website at districteight.com/pages/warranty-information
- For your convenience, there are a number of ways you may contact us: in writing, via fax, email or online as follows:

INFO@DISTRICTEIGHT.COM

(+84) 28 38 170 310

GENERAL CONDITION

- Any liability for District Eight is in any case excluded with respect to the technical and aesthetic performance of the products upholstered using the Client's own fabric or Client's own leather.
- Orders relating to products to be covered in fabric and leather will only be accepted for models where the price list indicates "COM".
- We reserve the right to reject any COM that we feel inadequate for any reason, and we are not responsible for any unsatisfactory results or deficiencies where COM or COM is used or involved.

REQUIREMENT OF SAMPLE

- District Eight requires a sample to be sent free of all expenses, together with a data sheet of the COM, for the purpose of a feasibility study.
- The COM samples should be minimum cm 30 x 30 in size for the necessary tests and should be sent to the attention of the District Eight, together with the fully filled document "COM MANAGEMENT FORM".

MATERIALS CONDITIONS

- Linear meters (or Yardage) quoted in the price list is approximate only. Linear meters (or Yardage) requirements for cover material are based on plain fabric cm 140 (55") width minimum. Fabrics measuring less than cm 140 in height may require additional fabric and/or, in some cases, may not be feasible and/or may require the inclusion of additional seams for particular models.
- Fabric requirements for patterns will be estimated upon receipt of a sample; as a rule, District Eight does not pattern match.
- Zipper and thread will follow District Eight available option; customer can send zipper and thread along with COM if preferred.
- For fabrics with repeat patterns, please specify the pattern size (vertically/horizontally) on the "COM MANAGEMENT FORM"
- For orders in COM for Projects/Contracts, it is necessary to send the flame-retardant certificate of COM to ensure suitability for the public spaces use.

SHIPPING OF CUSTOMER OWN FABRIC AND/OR CUSTOMER OWN LEATHER

- Execution of a COM order and shipping terms order shall have validity from the date the COM is registered, following the receipt of COM and confirmation of feasibility, and shall be communicated by the Customer Service who will send the order confirmation.
- When a COM order is confirmed, District Eight shall not be held liable for any faults in appearance and durability, or for any other quality, technical or aesthetic issue concerning the products made using the COM.
- Certificate of Origin COM or any special required documents by local authorities when deliver the order need to be provided by Customer.

COM MANAGEMENT FORM

CUSTOMER*:

ORDER NUMBER*:

SHIPPED FROM*

Manufacturer:

Dealer:

Other supplier:

Name of fabric/leather MANUFACTURER*

Name of COM	Color Reference	Composition	Quantity	Fabric Height
-------------	-----------------	-------------	----------	---------------

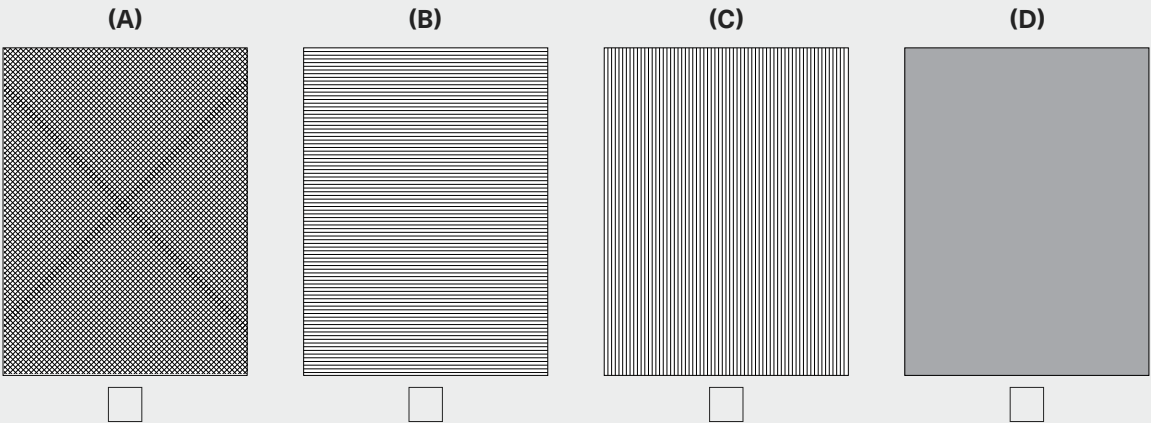
COM in compliance with:

<input type="checkbox"/>	_____
<input type="checkbox"/>	_____
<input type="checkbox"/>	Attached certificate

COM special treatments and customer's remarks:

IMPORTANT NOTES:

- Unless otherwise specified, the “correct” face of the fabric is the internal side turned towards the roll
- Unless otherwise specified, the product will be realized with the fabric pattern laid out vertically (e.g. Figure C)



DISTRICT EIGHT HEADQUARTERS:

33 Dong Khoi Str., Ben Nghe Ward, District 1,
Ho Chi Minh City, Vietnam

DISTRICT EIGHT NORTH AMERICA:

313 Space
2F, Space #213, 313 South Centennial Str.,
High Point, North Carolina

DISTRICT EIGHT ITALIA S.R.L.:

Via Giovanni Falcone n.7
62029 Tolentino (MC) Italy

DISTRICT EIGHT SÀI GÒN SHOWROOM:

33 Dong Khoi Street, Ben Nghe Ward, District 1,
Ho Chi Minh City, Vietnam

DISTRICT EIGHT TĐX ICE FACTORY SHOWROOM:

TĐX Ice Factory, 19/45 Tran Dinh Xu, Cau Kho Ward, District 1
Ho Chi Minh City, Vietnam

(+84) 90 238 83 10 | (+39) 335 610 0055

info@districteight.com

www.districteight.com
