

# DISTRICT EIGHT

## MATERIAL INDEX

UPDATED

**MAY 2022**

# MATERIAL INDEX

**WOOD** p.03

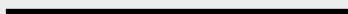
**METAL** p.04

<b>FARBIC</b>	<b>GRADE A</b>	p.05
	<b>GRADE B</b>	p.06
	<b>GRADE C</b>	p.07
	<b>GRADE D</b>	p.08
	<b>GRADE E</b>	p.09

**LEATHER**      **OMARI** p.10

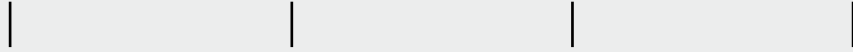
**PRODUCT MATERIAL  
SUITABILITY** p.11

**FABRIC CARE AND  
INSTRUCTION** p.13



# MATERIAL INDEX

## WOOD /



Faded Oak - MFO



Raw Oak - MOO



Beige Oak - MBO



Hard Fumed Oak - MHO



Dry Smoked Oak - MDO



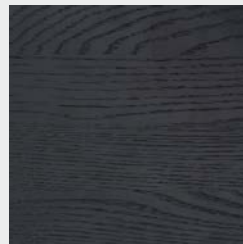
Seared Oak - MSO



Smoked Oak - MKO



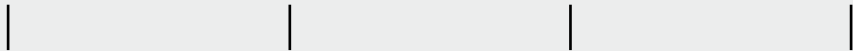
Ebonized Oak - MEO



Charred Black Oak - MCO

# MATERIAL INDEX

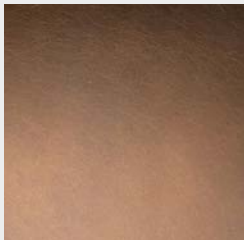
## METAL



Blackened Steel



Antique Brass



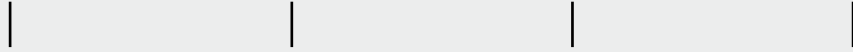
Antique Copper



Antique Nickel

# MATERIAL INDEX

## FABRIC / GRADE A



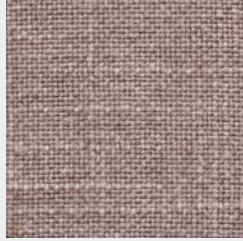
DIEGO



Diego Nuance - 1005



Diego Nehru - 1006



Diego Melba - 1007

BOLO



Bolo Grey - 1083



Bolo Beige - 1084

# MATERIAL INDEX

## FABRIC / GRADE B

GEMA



Gema Pearl - 1027



Gema Caviar - 1034



Gema Thunder - 1036



Gema Moonstone - 1049



Gema Cola - 1029

ARDA



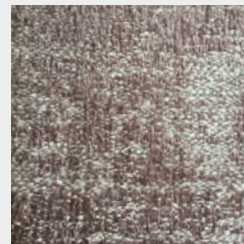
Arda Pearl - 1023



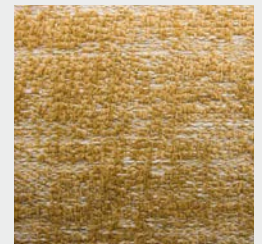
Arda Caviar - 1033



Arda Thunder - 1037

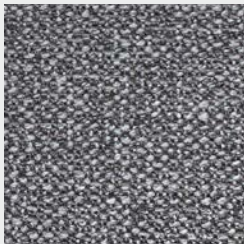


Arda Moonstone - 1048



Arda Cola- 1025

TARA



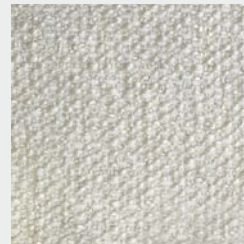
Tara Flint - 1050



Tara Sisal - 1051



Tara Quartz - 1052



Tara Ivory - 1085

VELVET



Velvet Petal - 1016



Velvet Pewter - 1017



Velvet Gold - 1022

# MATERIAL INDEX

## FABRIC / GRADE C

SOLA



Sola Seaweed - 1096



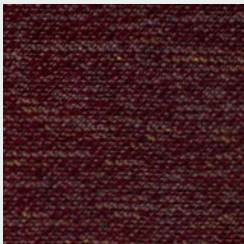
Sola Seaweed Stripe - 1097



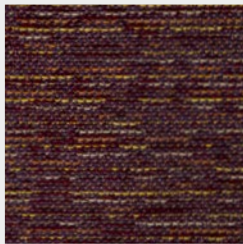
Sola Malt - 1098



Sola Malt Stripe - 1099



Sola Garnet - 1100



Sola Garnet Stripe - 1101



# MATERIAL INDEX

## FABRIC / GRADE D

BORA BORA



Bora Bora Ecu - 1053



Bora Bora Orca - 1054



Bora Bora Shark - 1055



Bora Bora Seashell - 1056



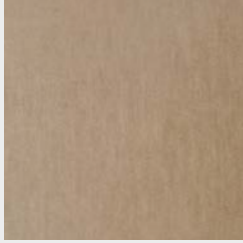
# MATERIAL INDEX

## FABRIC / GRADE E

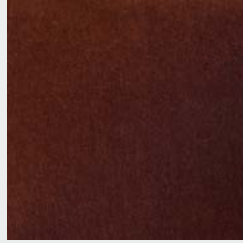
MOHAIR



Mohair Sage - 1091



Mohair Sand - 1092



Mohair Brick - 1093

# MATERIAL INDEX

## LEATHER /

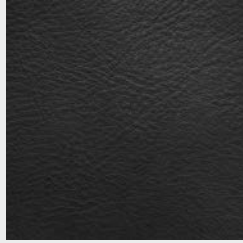
OMARI



Omari Chocolate - CH



Omari Putty - PU



Omari Ink Black - IB



Omari French Blue - FB



Omari Sepia - SE



Omari Cordova - CO



Omari Burlap - BU

# MATERIAL INDEX

## - SUITABILITY

		WOOD								
		MOO	MFO	MHO	MKO	MSO	MEO	MCO	MBO	MDO
GRADE A	Diego Nuance	-1005	•	•	•	•	•	•	•	•
	Diego Nehru	-1006	•	•	•	•	•	•	•	•
	Diego Melba	-1007	•	•	•	•			•	•
	Bolo Grey	-1083	•	•	•	•	•	•	•	•
	Bolo Beige	-1084	•	•	•	•	•	•	•	•
GRADE B	Arda Pearl	-1023	•	•	•	•	•	•	•	•
	Gema Pearl	-1027	•	•	•	•	•	•	•	•
	Arda Caviar	-1033				•	•	•		•
	Gema Caviar	-1034				•	•	•		•
	Arda Thunder	-1037	•	•	•	•	•	•	•	•
	Gema Thunder	-1036	•	•	•	•	•	•	•	•
	Arda Moonstone	-1048	•	•		•	•	•	•	•
	Gema Moonstone	-1049	•	•		•	•	•	•	•
	Adra Cola	-1025	•	•	•	•	•	•	•	•
	Gema Cola	-1029	•	•	•	•	•	•	•	•
	Tara Ivory	-1085	•	•	•	•	•	•	•	•
	Tara Quartz	-1052	•	•	•	•	•	•	•	•
	Tara Sisal	-1051	•		•	•	•		•	•
	Tara Flint	-1050				•	•	•		•
	Velvet Raffia	-1015	•	•	•	•	•	•	•	•
	Velvet Petal	-1016	•			•	•		•	
	Velvet Pewter	-1017				•	•	•	•	
	Velvet Gold	-1022				•	•	•	•	

# MATERIAL INDEX

## - SUITABILITY

		WOOD									
		MOO	MFO	MHO	MKO	MSO	MEO	MCO	MBO	MDO	
FABRIC	GRADE C	Sola Seaweed -1096	•		•	•	•	•	•	•	•
		Sola Seaweed Stripe -1097	•		•	•	•	•	•	•	•
		Sola Malt -1098	•		•	•	•	•	•	•	•
		Sola Malt Stripe -1099	•		•	•	•	•	•	•	•
		Sola Garnet -1100	•		•	•	•	•	•	•	•
		Sola Garnet Stripe -1101	•		•	•	•	•	•	•	•
	GRADE D	Bora Bora-Ecru -1053	•	•	•	•	•	•	•	•	•
		Bora Bora-Shark -1055	•	•		•	•	•	•	•	•
		Bora Bora-Seashell -1056	•	•	•	•	•	•	•	•	•
		Bora Bora-Orca -1054				•	•	•	•		•
	GRADE E	Mohair Sage -1091	•		•	•	•	•	•	•	•
		Mohair Sand -1092	•		•	•	•	•	•	•	•
		Mohair Brick -1093	•		•	•	•	•	•	•	•
	LEATHER	OMARI	Omari Chocolate - CH	•		•	•	•		•	•
			Omari Putty - PU	•	•	•	•	•	•	•	•
			Omari Ink Black - IB	•	•	•	•	•	•	•	•
			Omari French Blue - FB		•	•	•	•			
			Omari Sepia - SE		•	•	•	•		•	•
Omari Cordova - CO				•	•	•	•	•			
Omari Burlap - BU			•	•	•	•	•		•	•	
METAL	Antique Brass			•	•	•	•	•		•	
	Antique Nickel	•	•	•	•	•	•	•	•	•	
	Antique Copper						•	•			
	Dull Brass	•		•	•	•	•	•	•	•	

*The exclusive District Eight warranty is available only to you, the original purchaser, and becomes effective with your delivery date. District Eight will repair or replace at our discretion any piece of furniture that is defective in material or workmanship under terms and conditions outlined here. If District Eight determines that a repair is impractical, you will be furnished a substitute of the same or similar color, design, and quality.*

## OUR COMMITMENT & WARRANTY

- District Eight warrants to you, the original buyer, that goods shall be free of defects in material and/or workmanship attributable to manufacture for a period specified in the warranty details below. Damage resulting from improper handling after merchandise is received or from exposure to weather or extreme atmospheric conditions is not covered by the District Eight warranty. Warranty is subject to normal use under normal conditions. Effective with products purchased on or after June 1, 2015.

## DURATION OF WARRANTY

- For products invoiced to a company, District Eight offers a **1-year warranty** from date of delivery against manufacturer's defects. Qualified defects will be repaired or replaced at company's option, at no cost to the customer.

- For products invoiced to an individual, District Eight offers a **2-year warranty** from date of delivery against manufacturer's defects. Qualified defects will be repaired or replaced at company's option, at no cost to the customer.

## LIMITATIONS & COVERAGE EXCLUSIONS

**Effective with products purchased on or after June 1, 2015.** District Eight makes no implied warranties of merchantability or fitness for a particular purpose. These and all other implied warranties are specifically disclaimed. By implied warranties, District Eight references warranties that the law sometimes implies to have been given by the seller, even though they are not documented in writing.

### PLACE OF PURCHASE

- Our warranty protects purchases from Authorized District Eight Distributors, Wholesalers, Retailers and from District Eight directly through our showroom or website.

### IMPROPER CARE AND USE

- Proper care and usage are essential to preserving your rights under the warranty. This warranty does not apply if your District Eight merchandise is damaged by the use of detergents, abrasives or harsh cleaning agents.

### ACCIDENTS, ABUSE, NORMAL WEAR & TEAR

- This warranty does not cover damage resulting from negligence, abuse, normal wear and tear, or accidents: including (but not limited to) burns, cuts, scratches, tears, scuffs, watermarks, indentations or pet damage.

## PRODUCT MODIFICATIONS

- Any product modification by retailer, consumer or other parties not authorized by District Eight will void this warranty.

## FLOOR SAMPLES OR AS-IS PURCHASES

- This warranty does not cover floor samples or products designated "as is" at time of purchase.

## TOLERANCES

- COM must be approved by District Eight to ensure suitability for upholstery.

- All sizes and dimensions are subject to a 0.05cm tolerance.

- Any colour samples or samples of wood can only be considered as a guide. District Eight cannot be held responsible for any differences between the sample and the delivered goods, as colour changes occur naturally over time. Variances are not considered to be defects. Wear and tear due to normal everyday use on upholstery, surfaces etc. are not considered to be defects.

## CLAIMS PROCEDURE

- First and foremost, should you notice a manufacturing defect, it is important that you promptly notify the District Eight sales and marketing team. To exercise your rights under this warranty, you must submit the original invoice number, date of damage or defect, product and description, evidence of damage (photo or video) and how it occurred via the claims form.

- Please find the claim form on our website at [districteight.com/pages/warranty-information](http://districteight.com/pages/warranty-information)

- For your convenience, there are a number of ways you may contact us: in writing, via fax, email or online as follows:

**INFO@DISTRICTEIGHT.COM**  
**(+84) 28 38 170 310**

## GENERAL CONDITION

- Any liability for District Eight is in any case excluded with respect to the technical and aesthetic performance of the products upholstered using the Client's own fabric or Client's own leather.
- Orders relating to products to be covered in fabric and leather will only be accepted for models where the price list indicates "COM".
- We reserve the right to reject any COM that we feel inadequate for any reason, and we are not responsible for any unsatisfactory results or deficiencies where COM or COM is used or involved.

## REQUIREMENT OF SAMPLE

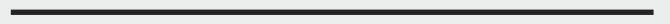
- District Eight requires a sample to be sent free of all expenses, together with a data sheet of the COM, for the purpose of a feasibility study.
- The COM samples should be minimum cm 30 x 30 in size for the necessary tests and should be sent to the attention of the District Eight, together with the fully filled document "COM MANAGEMENT FORM".

## MATERIALS CONDITIONS:

- Linear meters (or Yardage) quoted in the price list is approximate only. Linear meters (or Yardage) requirements for cover material are based on plain fabric cm 140 (55") width minimum. Fabrics measuring less than cm 140 in height may require additional fabric and/or, in some cases, may not be feasible and/or may require the inclusion of additional seams for particular models.
- Fabric requirements for patterns will be estimated upon receipt of a sample; as a rule, District Eight does not pattern match.
- Zipper and thread will follow District Eight available option; customer can send zipper and thread along with COM if preferred.
- For fabrics with repeat patterns, please specify the pattern size (vertically/horizontally) on the "COM MANAGEMENT FORM"
- For orders in COM for Projects/Contracts, it is necessary to send the flame-retardant certificate of COM to ensure suitability for the public spaces use.

## SHIPPING OF CUSTOMER OWN FABRIC AND/OR CUSTOMER OWN LEATHER

- Execution of a COM order and shipping terms order shall have validity from the date the COM is registered, following the receipt of COM and confirmation of feasibility, and shall be communicated by the Customer Service who will send the order confirmation.
- When a COM order is confirmed, District Eight shall not be held liable for any faults in appearance and durability, or for any other quality, technical or aesthetic issue concerning the products made using the COM.
- Certificate of Origin COM or any special required documents by local authorities when deliver the order need to be provided by Customer.



# COM MANAGEMENT FORM

CUSTOMER\*:

ORDER NUMBER\*:

SHIPPED FROM\*

Manufacturer:

Dealer:

Other supplier:

Name of fabric/leather MANUFACTURER\*

Name of COM	Color Reference	Composition	Quantity	Fabric Height
-------------	-----------------	-------------	----------	---------------

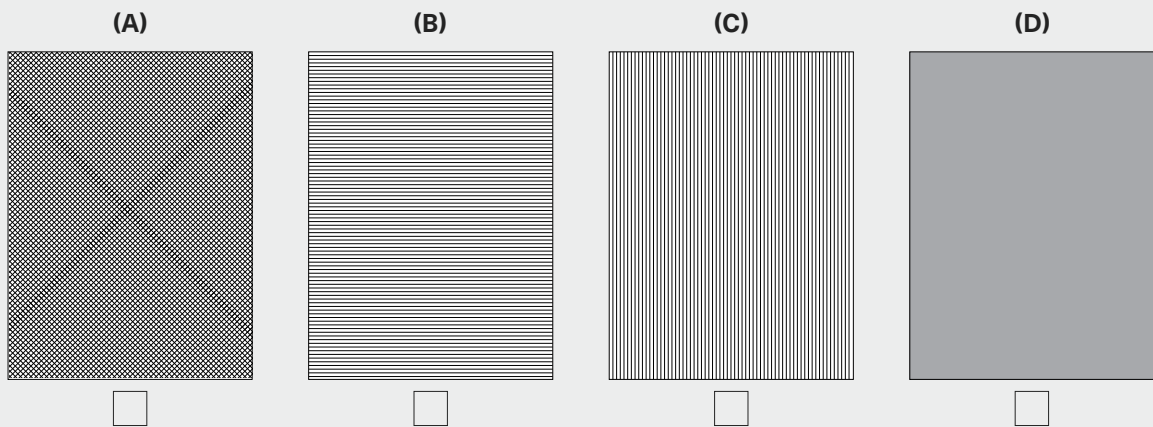
COM in compliance with:

- \_\_\_\_\_
- \_\_\_\_\_
- Attached certificate

COM special treatments and customer's remarks:

## IMPORTANT NOTES:

- Unless otherwise specified, the "correct" face of the fabric is the internal side turned towards the roll
- Unless otherwise specified, the product will be realized with the fabric pattern laid out vertically (e.g. Figure C)







## **DISTRICT EIGHT DESIGN OFFICE / SHOWROOM / FACTORY**

E4/52, 1A Highway, Binh Tri Dong B Ward,  
Binh Tan District, Ho Chi Minh City, Vietnam

P. (+84) 28 38 170 311  
(+84) 28 38 170 312

E. [info@districteight.com](mailto:info@districteight.com)

W. [www.districteight.com](http://www.districteight.com)

---